

WORKSPACE



Portfolio

June 2026

Workstations

Fixed Height
Height Adjustable
Power Beam
Benching

Soft Seating

Privacy
Collaboration
Meeting
Lounge

Storage

Personal
Bookcase
Pedestals
Laterals

Tables

Meeting
Conference
Flip
Cafe

Seating

Task
Multipurpose
Conference
Side

Accessories

Privacy Screens
Planter Wall
Orbit Divider
Monitor Arms

A One-Stop Shop.
Quality Products.
Stellar Warranty.
Design Support.



*It's our
guarantee.*

In stock and ready to ship in just 48 hours – that's our mission. No fuss, no hassle, just the office furniture you need, fast.

LEAD TIMES



Standard – Core Collection
In stock and ships in 48 hours!

All orders with products* in quantities under 50

*Noted size/finish exceptions below.

10 Day

Extended – Expanded Collection
A few options + larger orders

All orders with products in quantities of 50 or more

Plus, select products (in any quantity):

1. Grey Elm and Continental Walnut worksurfaces (all sizes)
2. 54" and 66" wide worksurfaces (all finishes)
3. Array Premium Surface

Lead times start with order acknowledgment of a clean P.O.

Order acceptance cutoff is Noon EST.

Example:

Orders in before Noon EST on a Monday will ship Wednesday.

Orders in after Noon EST on a Monday will ship on Thursday.

CONTENTS

WORKSTATIONS

- [Kinetic Height Adjustable desks 9](#)
- [Array power/data beam..... 13](#)
- [Vibe benching 19](#)
- [Axis fixed height desks..... 25](#)

PRIVACY & DECOR

- [Versi screens..... 31](#)
- [Viro planter wall 36](#)

STORAGE

- [Milo metal..... 40](#)
- [Mochi undermount..... 45](#)

TABLES

- [Modulus..... 50](#)
- [Flip Tables..... 52](#)
- [Axis tables 54](#)

LOUNGE/MEETING/FOCUS

- [Motion® Office 58](#)

SEATING

- [Task 70](#)
- [Multipurpose 75](#)
- [Conference..... 78](#)

RECEPTION

- [Anvil..... 82](#)
- [Axis 83](#)

ACCESSORIES

- [Orbit Divider 85](#)
- [Monitor Arms..... 88](#)

GENERAL INFO

- [Contacts..... 90](#)
- [Product Designer 91](#)



Workstations

- Kinetic Height Adjustable Desks
- Array Power/Data Beam
- Vibe Height Adjustable Benching
- Axis Fixed Height Benching

HEIGHT ADJUSTABLE DESKS

Kinetic

Electric height adjustable desks
with 2- or 3-stage legs





At home in both open plans and private offices, Kinetic brings agility and movement, for healthier and happier workspaces.

HEIGHT ADJUSTABLE Kinetic

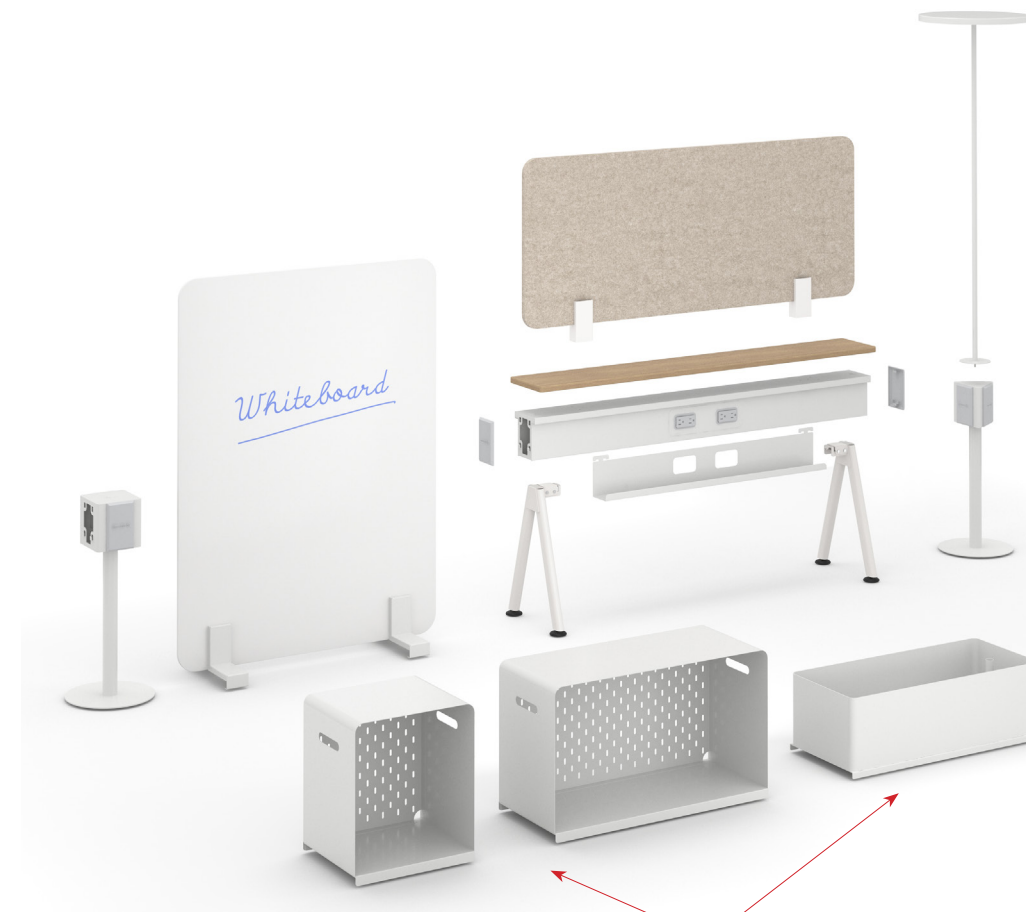


The most affordable, highly functional height adjustable workstation on the market, with a quick and quiet motor, adjusted with push-button controller.



Power+Data Beam Array

POWER/DATA BEAM SYSTEM ARRAY



A full spectrum of options for Array is available, from writeable, magnetic whiteboards to tackable PET screens and neighborhood lighting.

With the optional Premium Surface (available in 4 laminate colors), additional accessories are available, including stackable storage boxes and planter boxes.

Storage and Planter Boxes are also available with Premium Surface



Design your Array beam with all the components to make fully functional neighborhoods in any space. No-tool assembly takes 10 minutes or less per beam.

Array's flexibility allows configuration of open plan, training and collaborative spaces that are powered up, functional and engaging.



120° Array with Premium Surface, 3- and 4-way posts, planter boxes, screens and neighborhood lights, plus Kinetic 120° desks and Milo storage.



Four Array beams with Premium Surface, small and large stackable storage boxes, planter boxes, whiteboards, screens and neighborhood lights, plus Kinetic height adjustable desks.



Array beams with Premium Surface in T-layout, including screens, storage and neighborhood lighting, plus Kinetic desks and Milo storage.



Four Array beams with screens, plus 8 Kinetic height adjustable desks with Mochi undermount personal storage.

HEIGHT ADJUSTABLE BENCHING

Vibe





HEIGHT ADJUSTABLE BENCHING: VIBE



2-stage legs with single and double run applications, plus 90 degree returns



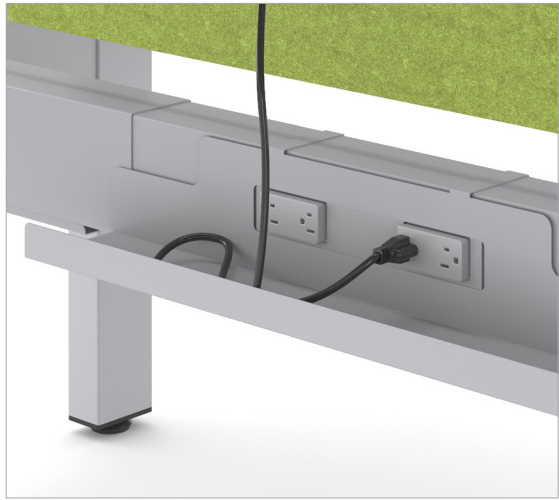
Power Controllers with 3 memory presets



Gallery End Panel



Privacy Panels



Cable Trays



Power Poles

Vibe offers flexibility in design, with both single and double runs and corner returns



HEIGHT ADJUSTABLE BENCHING: VIBE

VIBE TYPICALS



6-pack DR Vibe in Black finish with Landmark Wood worksurfaces and Gallery End Panels, for a clean, finished look. Also includes 12" Milo pedestals with Ash cushion tops and Ash Versi privacy screens.



6-pack DR Vibe with returns and Privacy End Panels in Silver finish, with Grey Elm worksurfaces. Also includes 12" Milo mobile pedestals with cushion tops and Versi privacy screens in Honey.



6-pack Vibe benching with Privacy End Panels in Black, and Landmark Wood worksurfaces. Includes Milo 12" mobile pedestal with cushion tops in Ash, with coordinating Ash Versi privacy screens



3-pack SR Vibe benching in Silver with Landmark Wood worksurfaces. Includes Mochi storage and Versi privacy screens in Natural.

FIXED HEIGHT WORKSTATIONS

Axis

Axis offers classic fixed height
benching with a streamlined
look and functionality.

FIXED HEIGHT WORKSTATIONS: AXIS

Axis offers flexibility in design for both open plans and private offices.

FIXED HEIGHT WORKSTATIONS: AXIS



Axis offers spine, desk hung and return screens in our 8-color Ripple palette.





Privacy + Decor

Versi screen system
Viro planter wall

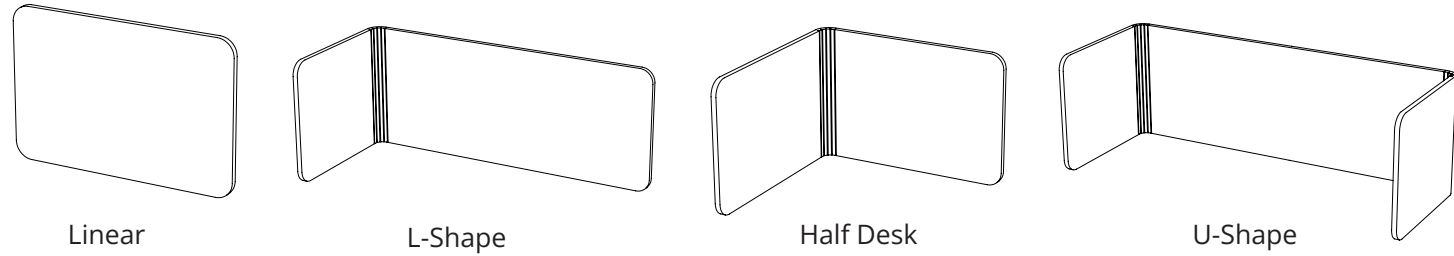
SCREEN + BRACKET SYSTEM

Versi

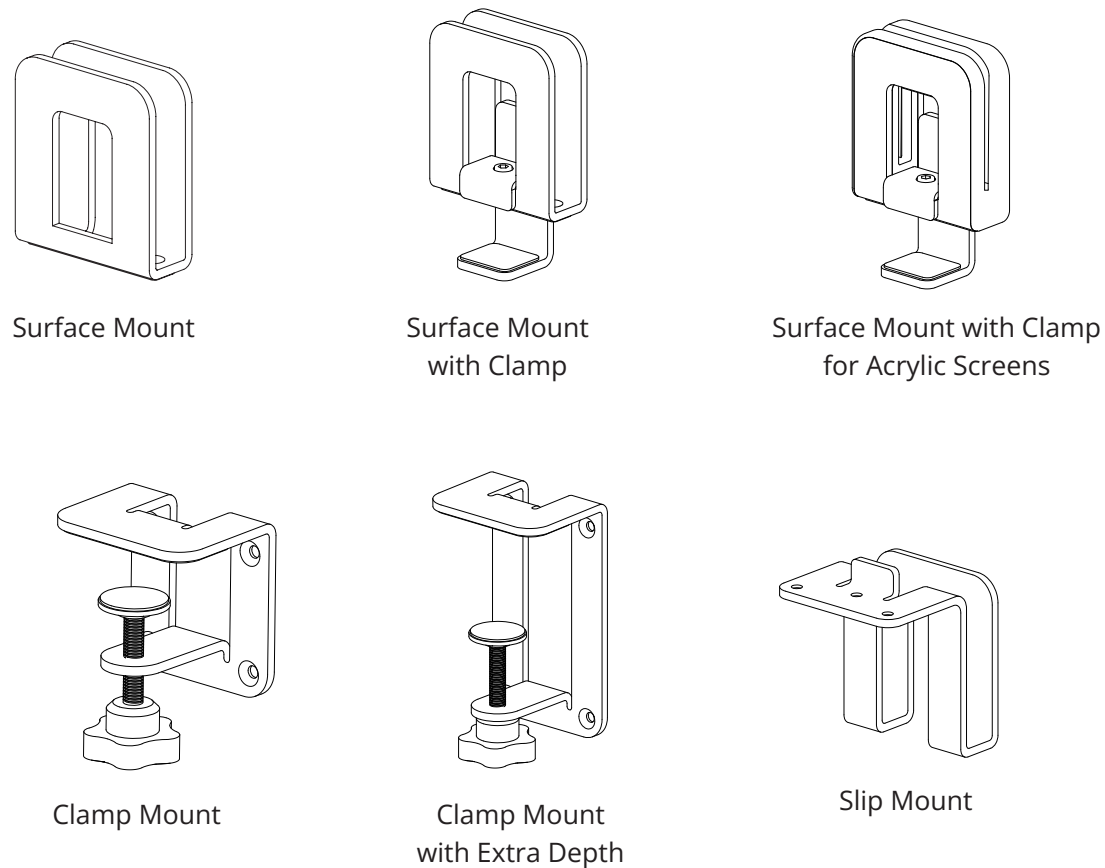
Choose your level of privacy with 4 screen styles in 8 colors, plus 6 bracket options.

Customize your Versi to perfectly suit your privacy needs with 4 screen styles and 6 bracket options.

Screen Styles



Bracket Options



PRIVACY SCREEN/BRACKET SYSTEM: VERSI



Versi's thick, 50% recycled 18mm PET offers structural integrity and premium sound absorption.

Screens



Brackets

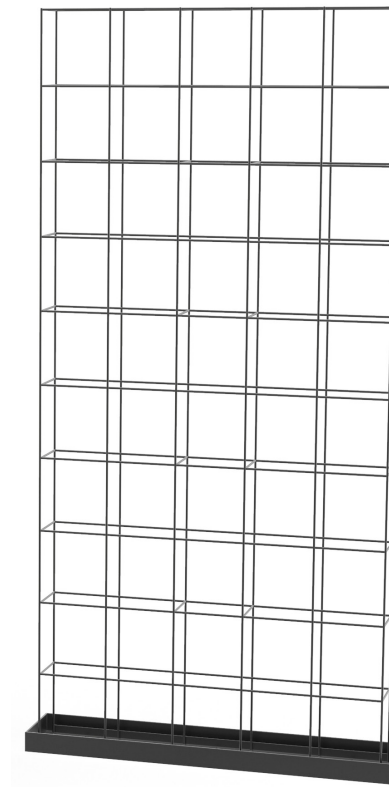


PRIVACY + DECOR

Viro planter wall



Viro brings the outdoors in, providing both cleaner air and space division.



STANDARD FEATURES

- Steel wire frame construction finished in black powder coat
- Pre-drilled holes in the tray to securely fasten base
- Overflow tray to catch drips and keep any mess contained

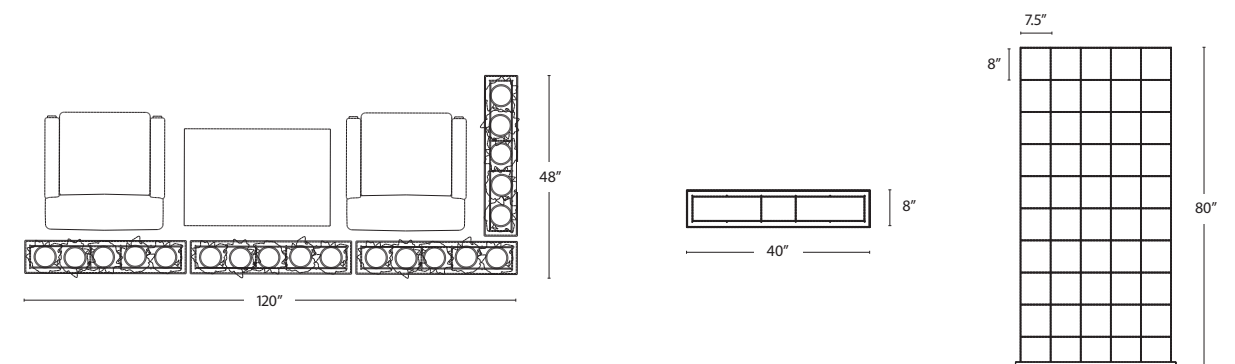
APPLICATIONS

- Collaborative areas, lunch rooms, open offices, private offices and more!

OPTIONAL UPGRADES

- Optional plant pots sold separately

UNIT DIMENSIONS





Storage
Milo metal
Mochi undermount

METAL STORAGE Milo



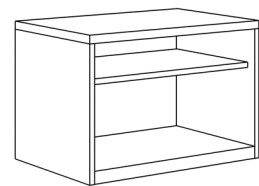
Milo comes in 3 metal colors and a palette of 8 cushion felts, for endless design possibilities. Cushion tops add color, impromptu seating spaces, and a soft landing for your stuff.



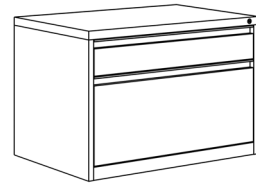
Lockable pedestals ensure security when you need it.

Milo melds style and function with its classic, streamlined design and the structural stability of counterweights.

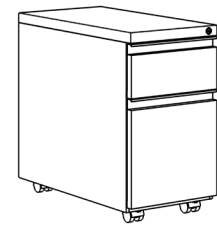
Milo Styles



Bookcase



Lateral File, 1.5 drawer



12" Mobile Box-File



15" Box-Box-File

Available with Cushion Top

Metal Finishes



Black

Silver

White

Cushion Top Fabrics



Charcoal

Chilli

Stone

Ocean

Ash

Avocado

Natural

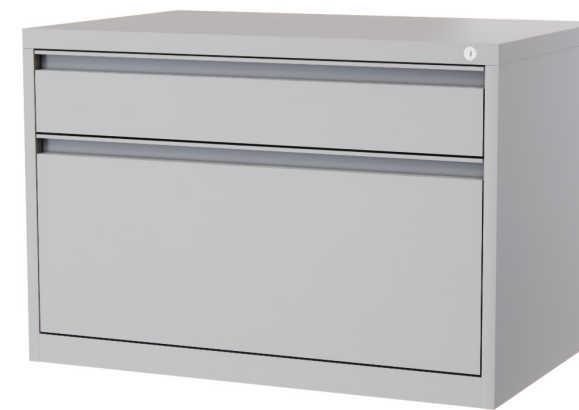
Honey



12" Box-File with casters



15" Box-Box-File



Lateral File, 1.5 drawer



Bookcase

UNDERMOUNT STORAGE Mochi



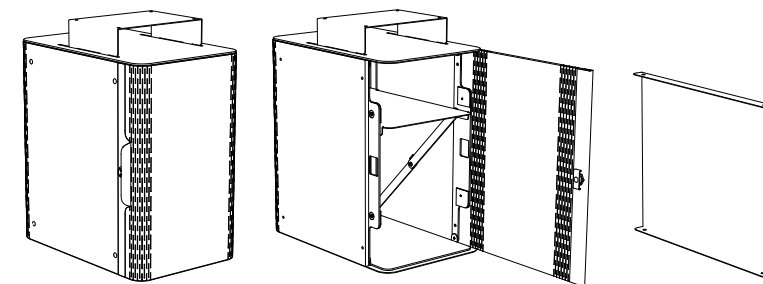


Mochi's interior includes a shelf and divider, perfect for storing laptops and everyday essentials.

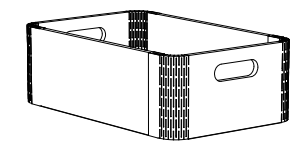
UNDERMOUNT PERSONAL STORAGE: MOCHI



Standard Components



Mochi undermount storage unit includes interior shelf & laptop divider



Storage Drawer
Optional

PET Wrap Colors Ripple Collection





Tables

Conference
Meeting
Café
Flip

MODULUS CONFERENCE, CAFE, MEETING

Modulus meets your needs for collaboration in any environment, from boardrooms to breakrooms.



MODULUS FLIP TABLES



Modulus flip tables offer flexibility and mobility, with flip and nest functionality for easy storage.



Standard features

- White or black powdercoat poles, rail & pullbars, polished cast alloy feet, silver casters
- ANSI-BIFMA approved for commercial use
- White worksurfaces are in stock. Other finish options are available.

Standard frame sizes fit worktops of

- 36" - 84" length
- 24" - 42" width



Modulus Black Poles and Rails

- 2x locking, 2x non locking casters
- Black poles, rails, pullbars, polished alloy feet
- One handed mechanism use
- Industrial grade nylon mechanism includes vertical locking mechanism



Modulus White Poles and Rails

- 2x locking, 2x non locking casters
- White poles, rails, pullbars, polished alloy feet
- One handed mechanism use
- Industrial grade nylon mechanism includes vertical locking mechanism



Modulus Flip Table Modesty

Made to suit Modulus flip tables and available in a silver or white finish.



Modulus Flip Table Links

Connecting tables together is made easy with the very secure and simple-to-operate mechanism





Axis

Revitalize your work environment by breaking away from the traditional boardroom setting with Axis Bar Leaners and Meeting tables.

AXIS MEETING TABLES



STANDARD FEATURES

- White or silver powdercoat finish to all frames
- 2" x 2" legs; 2" x 1" rails
- Levelling glides - Height Adjustable 27" - 30" (worksurface height 28" - 32")
- Worksurfaces finished in White melamine on E1 grade substrate; matching SPVC edge

Coffee Table Sizes

- 24" x 24" x 18" high. Rails to all four sides.
- 24" x 36" x 18" high. Rails to all four sides.
- 24" x 48" x 18" high. Rails to all four sides.

Meeting Table Sizes

- 36" diameter x 28.75" high
- 42" diameter x 28.75" high
- 60" diameter x 28.75" high
- 39" x 39" x 28.75" high

Conference Table Sizes

- 72" x 48" x 28.75" high. Rails to all four sides
- 95" x 48" x 28.75" high. Rails to all four sides
- 95" x 48" x 28.75" high. Rails to all four sides (with inset legs - 71" x 29" frame)



Coffee Tables



Meeting Tables



Conference Tables

AXIS BAR LEANER



Axis Bar leaner in black powdercoat with Charcoal Game Barstools fully upholstered in Breathe Tomato Red



Axis Bar Leaner in white powdercoat with Charcoal Game Barstools fully upholstered in Breathe Lime Green



Single Span



Double Span

STANDARD FEATURES

- Black or white powdercoat finish to frames
- Worksurfaces finished in White melamine on E1 grade substrate; matching SPVC edge

Single Span Sizes

- 72" x 24" x 42" high
- 72" x 30" x 42" high
- 72" x 36" x 42" high
- 72" x 48" x 42" high
- 95" x 48" x 42" high

Double Span Sizes

- 95" x 24" x 42" high
- 95" x 30" x 42" high
- 120" x 24" x 42" high
- 120" x 30" x 42" high
- 142" x 24" x 42" high
- 142" x 30" x 42" high
- 142" x 48" x 42" high





Motion[®] Office

Soft Seating
for Privacy, Lounge
+ Collaboration



1
Meet
Up to 4 people



3
Expo
Team presentations



2
Arc
Small groups up to 5

Motion® Office
— 5 Styles —
for all the ways we work



4 Modules to mix and match for lounge and open areas
Loop

TABLES

Compliment and complete any of our Motion® Office pieces with tables to provide a place to set books and bags, exhibit decor, use electronics, write notes and more.



Frame Color



Black

Laminate



Classic White



Continental Walnut



Landmark Wood



Grey Elm



5 **Wing**
Solo focus work

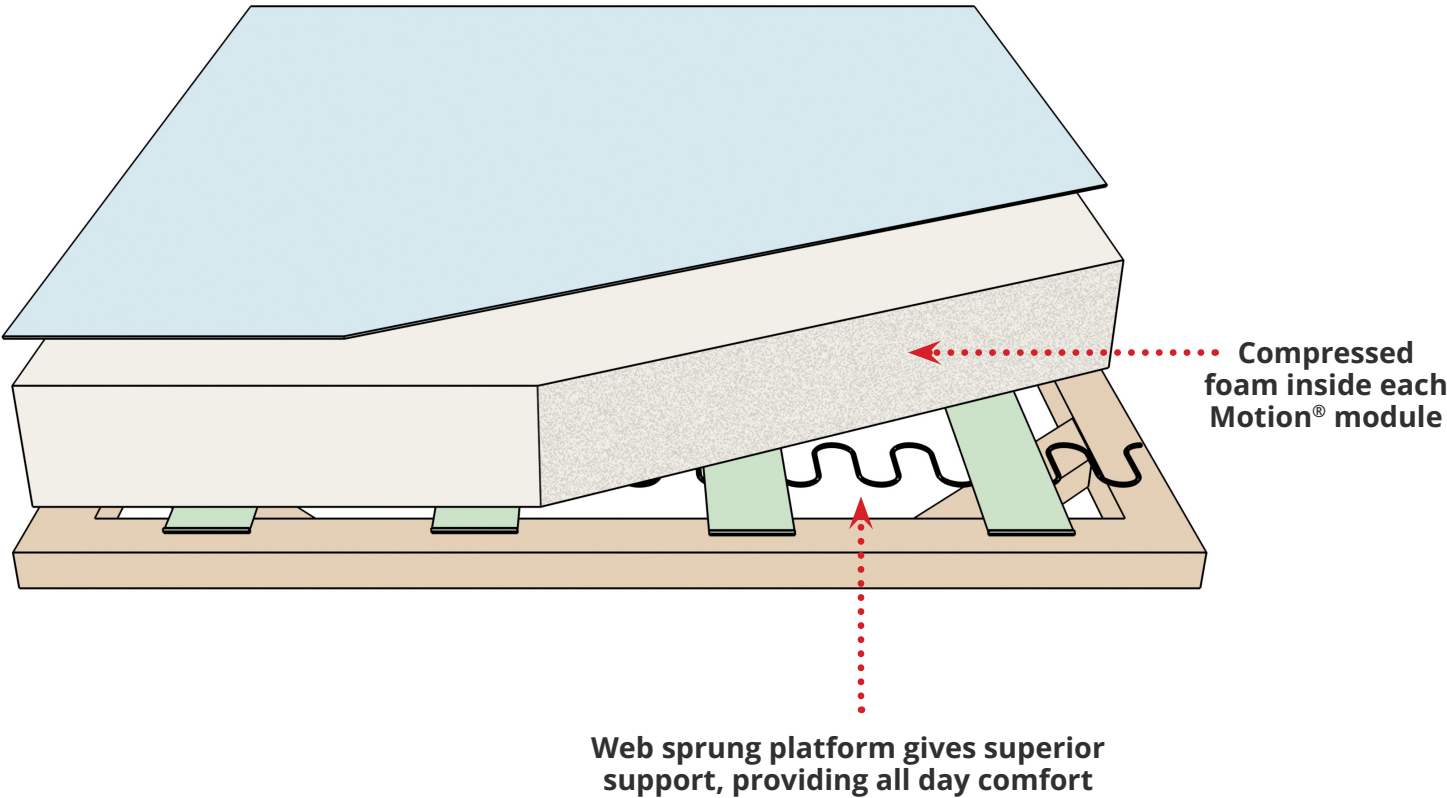


Motion® Office prioritizes comfort, with a multi layered, supportive foundation.

Motion® Office modular seating is built with layers of comfort, for all-day seating that supports the body, naturally.

Motion® modules offer premium comfort with high-resilience foam and pocket springs that give rest and relief to your body - whether you are working, socializing, waiting or just relaxing.

Our comfort promise is backed up with a 10-year warranty. Review the terms in our Warranty document.

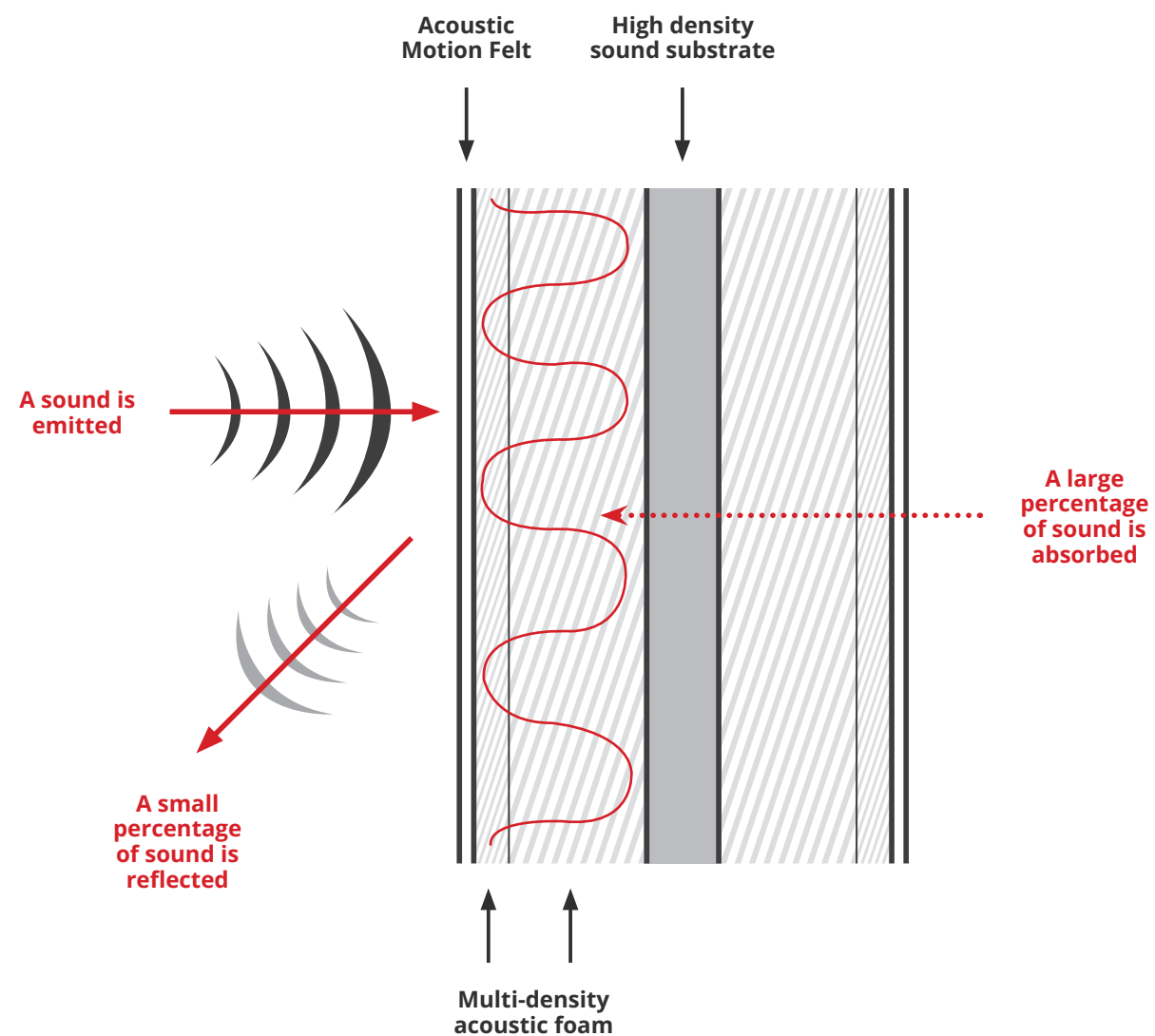


Unlike competitor products where fabric covers foam atop hollow plywood, Motion® Office foam sits on a web sprung platform, supporting the body more effectively and giving greater comfort - especially impactful with long-term sitting.

Standard wall materials absorb 3%, MotionOffice has been tested and absorbs 76% of sound waves!

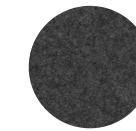
Imagine standing in the middle of a room with all concrete surfaces and one open window, and you blow a loud whistle. The sound that hits the open window passes right through. The sound that hits the concrete surfaces in the room begin to reflect back. The NRC (Noise Reduction Coefficient) of the open window would be 1.00 which is the absence of sound reflection. The NRC of concrete is .03, indicating that 97% of the noise that hits the concrete surfaces will reflect back off the surface. The NRC value of a surface simply denotes its ability to absorb vs reflect sound. The higher the NRC value, the stronger the sound absorption and the lower the sound reflection in the room.

MotionOffice panels have an NRC rating of 0.76 which means that 76% of the sound wave entering into the material will be captured and converted. MotionOffice dramatically contributes to reduction of noise bleed in open plan environments!

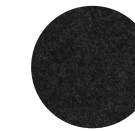


Motion Finishes

Stock Felt Colors



Stone Grey



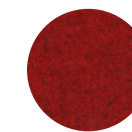
Charcoal Grey

Upgrade Felt Colors – Plush Collection

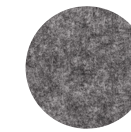
Applies to Meeting and Wing 1 seat backs, Throw Pillows only



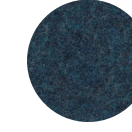
Charcoal



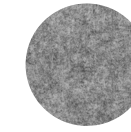
Chilli



Stone



Ocean



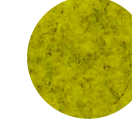
Ash



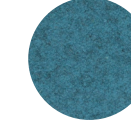
Avocado



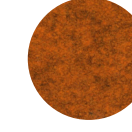
Natural



Honey

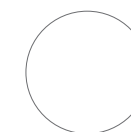


Glacier



Sunset

Table Top Laminates



Classic White



Grey Elm



Landmark Wood



Continental Walnut



Seating

Task
Conference
Multipurpose
Side

Radius



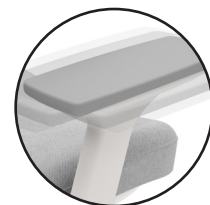
Seat Depth Adjustment

Seat slider adjusts seat for maximum comfort per user.



Seat Tilt Mechanism

Easily control seat height and tilt to customize posture.



3-Way Adjustable Armrests

Armrest adjusts by height, depth and left to right.



Intuitive Back Tilt

Weight-activated back tilt offers a customized, supportive sit.



Lumbar Support

Adjustable lumbar support helps guide good posture and all-day comfort

Radius



Applications:

Every workstation, conference room, meeting area

Features

- Black / White Frame
- Breatheable Mesh Back
- Self-tension Tilt
- Ergonomic Support
- 3-Way Arms
- Seat Depth Adjust

Specifications:

- Seat Depth: 19.5" - 22"
- Seat Width: 20.5"
- Seat tilt: -45°
- Weight: 37 lbs
- Overall Height: 38" - 43"

Finishes:



10 YEAR GUARANTEE

300 LB RATING

Balance Executive



FEATURES

- Solid, cast aluminium synchro-tilting mechanism with multi-fulcrum support
- Simple, precise weight specific tilt action
- Push/pull sliding seat depth adjustment with five positions
- Advance tilting limiter with two step memory
- Polished alloy base and mechanism
- Mesh backrest
- Available in black Faux leather/black mesh and white Faux leather/white mesh
- Suitable for task, executive, conference and boardroom seating

OPTIONAL UPGRADES

- Optional lumbar and/or headrest
- Multi adjustable arms - pair
- Drafting gas lift with chrome foot ring
- Seat cover in Breathe fabric



Balance Executive

Seat height: 17.5-21.5"
 Seat width: 20.3"
 Seat depth: 19.3"
 Overall height: 39-42.9"

Compass



Synchro-tilting
 Enhances comfort by adapting seat and backrest angles for ergonomic support



Adjustable Arms
 Extend the arms up to 3.5 inches for comfortable resting posture



4-Position Locking
 Recline and lock the seatback in 4 positions for optimal comfort depending on your environment



Adjustable Lumbar
 Adjust the height and pressure of the lumbar to maximize comfort and support

Applications:
 Every workstation, conference room, meeting area

Features
 Breathable mesh back
 Heavy duty castors

Specifications:
 Seat Depth: 19.5" - 22"
 Seat Width: 20.5"
 Seat Height: 18" - 22.5"

Finishes:

 Black White

All-day comfort, moulded foam seat cushion
 Pneumatic height adjustment
 Seat back tension adjustment
 Seat depth adjustment

Overall Height: 38" - 43"
 Seat tilt: -45°
 Weight: 37 lbs
 Volume: 3.5 cu ft



Balance Training



FEATURES

- Integral arms and high quality supportive black mesh backrest combine to give flexible comfort
- High resistance moulded foam and hard-wearing fabric for high use areas - upholstered in Breathe black fabric
- Super strong reclining mechanism to give relaxation when you want
- Fold up seat allows for nesting to save space when not in use
- Supplied standard with free wheeling casters - ideal for large venues
- Suitable for executive side chair, conference, training and boardroom seating

OPTIONAL UPGRADES

- Table arm kit



10 YEAR GUARANTEE

300 lb RATING

ISO14001

Balance Training

Seat height: 17.7"
 Seat width: 18"
 Seat depth: 17.7"
 Overall height: 32"

Balance Visitor



FEATURES

- Black powdercoated cantilever steel frame
- Moulded, high resistance foam, upholstered in hard wearing Breathe black fabric
- Ergonomically contoured high quality black mesh
- Suitable for executive side chair, conference and boardroom seating

10 YEAR GUARANTEE

300 lb RATING

ISO14001

Balance Visitor

Seat height: 17"
 Seat width: 24"
 Seat depth: 22"
 Overall height: 34"

Game



FEATURES

- Strong rigid, frame with chrome finish
- The game chair is very light to carry
- Available as 4 leg in chair or barstool height
- Large contoured seat and back
- Shell colours comes in charcoal
- Space saving - stacks up to 9 chairs high
- Seat tag conveniently hidden on backrest - slides open/closed to reveal potential seating numbers
- Suitable for training, conference, classroom, healthcare, retail and cafeteria seating
- Upholstery options - seat only, seat and back, back only, or no upholstery

Fabric Colours



10 YEAR GUARANTEE 300 lb RATING ISO14001

Game Chair

Seat height: 18.1"
 Seat width: 17.7"
 Seat depth: 17.7"
 Overall height: 31.9"

Game Barstool

Seat height: 29.5"
 Seat width: 17.7"
 Seat depth: 17.7"
 Overall height: 42.5"

MULTIPURPOSE

Otto



FEATURES

- Thick foam pad upholstered in Motion Felt
- Add colour and function to your collaboration spaces
- Otto is the perfect seat for those drop-in visitors and in the creative zones in your workspace
- Caster base makes it easy to manoeuvre around
- Suitable for breakout zones and casual meeting areas

Fabric Colours



10 YEAR GUARANTEE 300 lb RATING ISO14001

Otto Stool

Seat height: 17.3"
 Seat diameter: 17.7" (top)
 20.9" (bottom)

Mode



FEATURES

- Synchronised tilting mechanism with weight specific tension control
- Luxurious upholstered cushions in black or white faux leather with matching removable arm covers
- Mirror finish stainless steel frame and removable armrests with hidden fixings
- Fully sprung seat base for outstanding comfort and support
- Complete family - highback, midback and visitor
- Suitable for executive, conference or boardroom seating

10 YEAR GUARANTEE 300 lb RATING ISO14001

Mode High Back

Seat height: 17.7"
 Seat width: 18"
 Seat depth: 17.7"
 Overall height: 32"

Mode Mid Back

Seat height: 17.7"
 Seat width: 18"
 Seat depth: 17.7"
 Overall height: 32"

Mode Guest

Seat height: 17.7"
 Seat width: 18"
 Seat depth: 17.7"
 Overall height: 32"

Luna



FEATURES

- One-piece flexible polypropylene shell available in black or white
- Comfortable seat cushion upholstered in Motion Felt or black / white Faux leather
- Steel legs (black or white powdercoat finish) with casters or a 4 leg oak frame
- Available in chair or barstool style
- Suitable for meeting, visitor, breakout or cafeteria areas

Fabric Colours



10 YEAR GUARANTEE 220 lb RATING ISO14001

Luna Mobile Chair

Seat height: 17.3"
 Seat width: 18.5"
 Seat depth: 17.3"
 Overall height: 31.5"

Luna Oak Chair

Seat height: 16.5"
 Seat width: 18.5"
 Seat depth: 17.3"
 Overall height: 31.1"

Luna Oak Barstool

Seat height: 29.1"
 Seat width: 16.1"
 Seat depth: 13.8"
 Overall height: 39.4"



Reception

Anvil

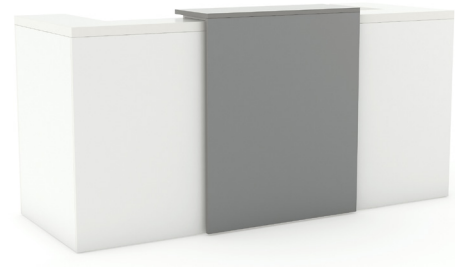


STANDARD FEATURES

- Studio White melamine.
- 3/4", flush-joined construction.
- White or silver, centre feature panel.
- Concealed telescopic chassis adjusts to suit worktop size (adjustable in 2" increments)
- White worksurfaces are in stock. Other finish options are available.

STANDARD SIZES

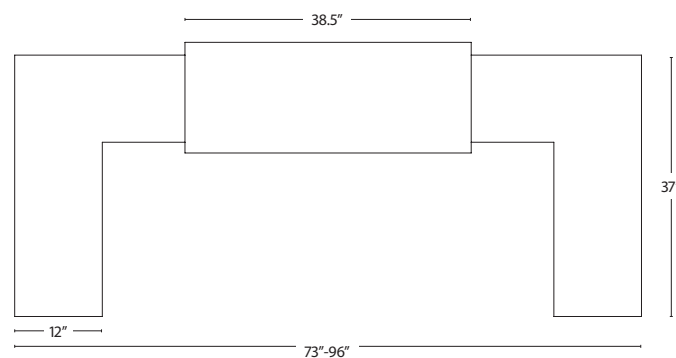
- Minimum closed, internal: 71" x 34"
- Maximum open, internal: 95" x 34"
- Minimum closed, external: 73" x 37"
- Maximum open, external: 96" x 37"
- Height 42"



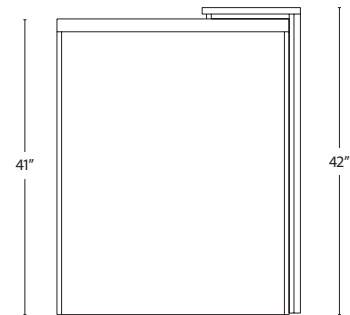
Anvil reception with silver panel

RECEPTION SIZE GUIDE

Straight Reception with Desk



Reception Heights



Axis



STANDARD FEATURES

- Studio White melamine
- Chrome beading detail on front
- 0.75", flush-joined construction
- Straight or 90° options

STANDARD SIZES

- 90° Corner: 42"h x 72.5"w x 72.5"w x 12"d
- Straight: 42"h x 72.5"w x 12"d



Straight Reception with Top



Straight Reception without Top



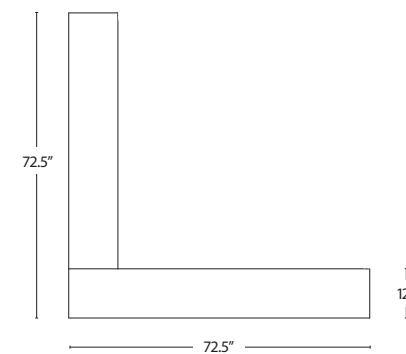
Corner Reception with Top



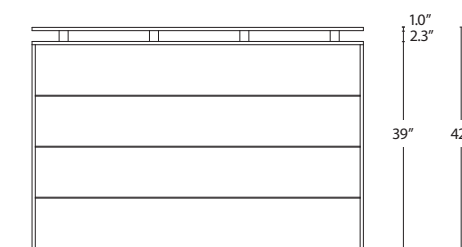
Corner Reception without Top

RECEPTION SIZE GUIDE

Corner Reception with 90 Degree



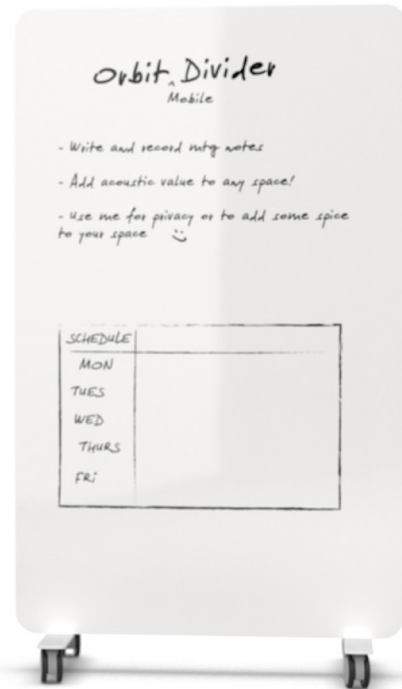
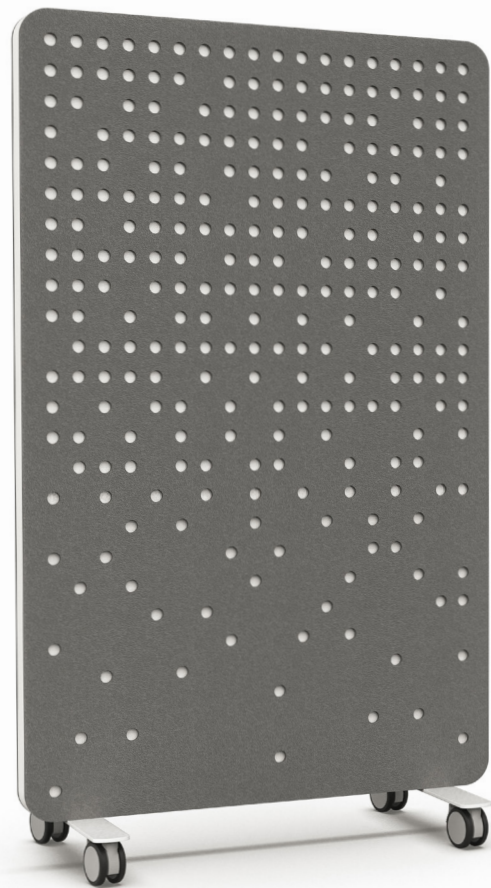
Reception Heights



ACCESSORIES Orbit



ACCESSORIES: Orbit Divider



Choose e-Panel fabric or Whiteboard HPL surfaces with Arctic White powder coated feet



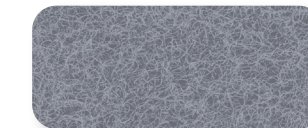
STANDARD FEATURES

- Choose e-Panel fabric or Whiteboard HPL surfaces with Arctic White powder coated feet
- Recycled e-Panel with 0.76 NRC rating adds acoustic/aesthetic properties
- Hollow-core design and CombCore (honeycomb) structure creates a rigid, lightweight panel that's easy to move
- Locking casters

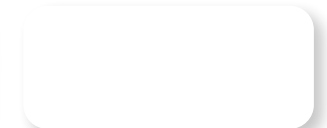
STANDARD SIZES

- 60"W x 36"H

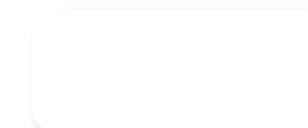
STANDARD FINISHES



Deep Grey e-Panel (pixel design only)

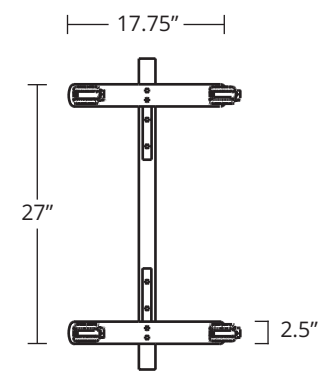
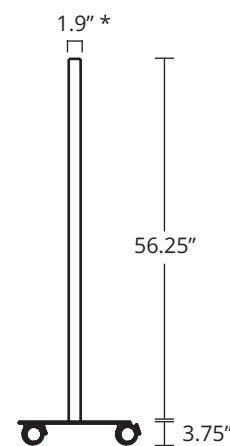
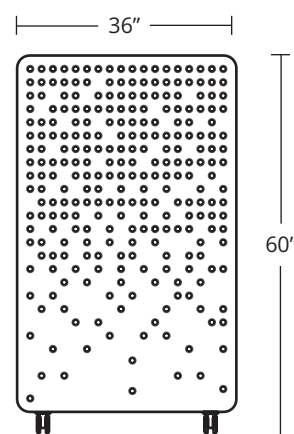


Arctic White powder coat

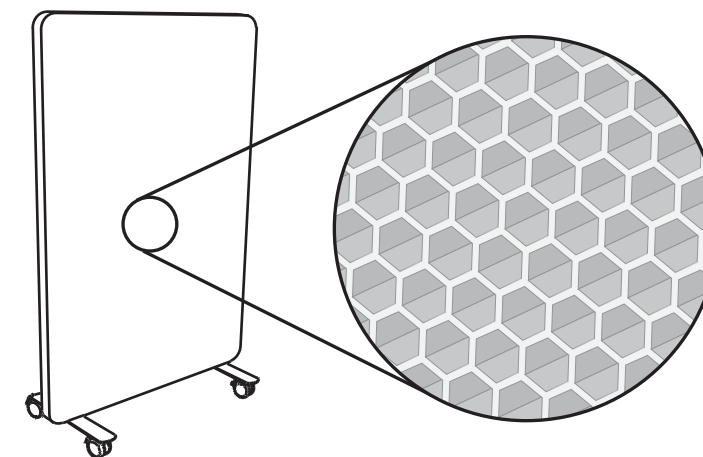


Whiteboard HPL

UNIT DIMENSIONS



* 2.6" with double sided e-Panel design



COMBCORE STRUCTURE



Significant reduction in weight and material for ease of mobility



Environmentally friendly, produced from 100% recycled materials



Monitor Arms - single and dual



Cable Management

The cable management system keeps cables concealed and neatly organized.



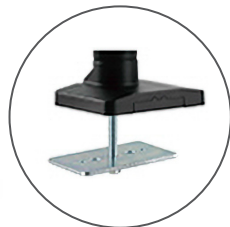
VESA Mount

VESA mounts are detachable and fully adjustable.



Grip Handle

The grip handle can position both monitors simultaneously.



Mount Options

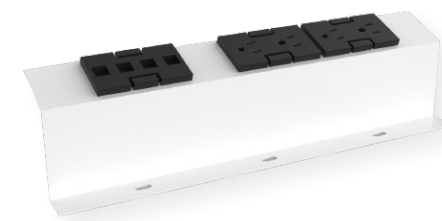
Two mount options are available including a desk clamp and a grommet.



Lockable Arm Rotation

A discreet locking screw prevents the arm from rotating into adjacent stations.

ACCESSORIES: MISC



POWER & DATA:

Two and four outlet power options. In-tray configurations only.



VOLTRA POWER MODULE:

3 outlets, 1 USB port and 1 USB-C port desktop power module option.



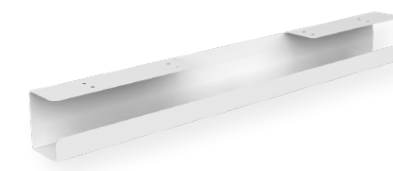
CABLE BRIDGE:

Joins the cable trays between workstations to conceal cables.



CABLE SLEEVE

Conceals cables from the desktop to the cable tray.



ELECTRAY:

Optional cable tray fastens to the underside of a worksurface to hold cables and power adapters.

Stay Connected

 [linkedin.com/company/workspace48](https://www.linkedin.com/company/workspace48)

 [instagram.com/workspace48](https://www.instagram.com/workspace48)

 [youtube.com/@workspace48](https://www.youtube.com/@workspace48)



General Inquiries

info@workspace48.com

Orders

orders@workspace48.com

Products, Pricing & Resources

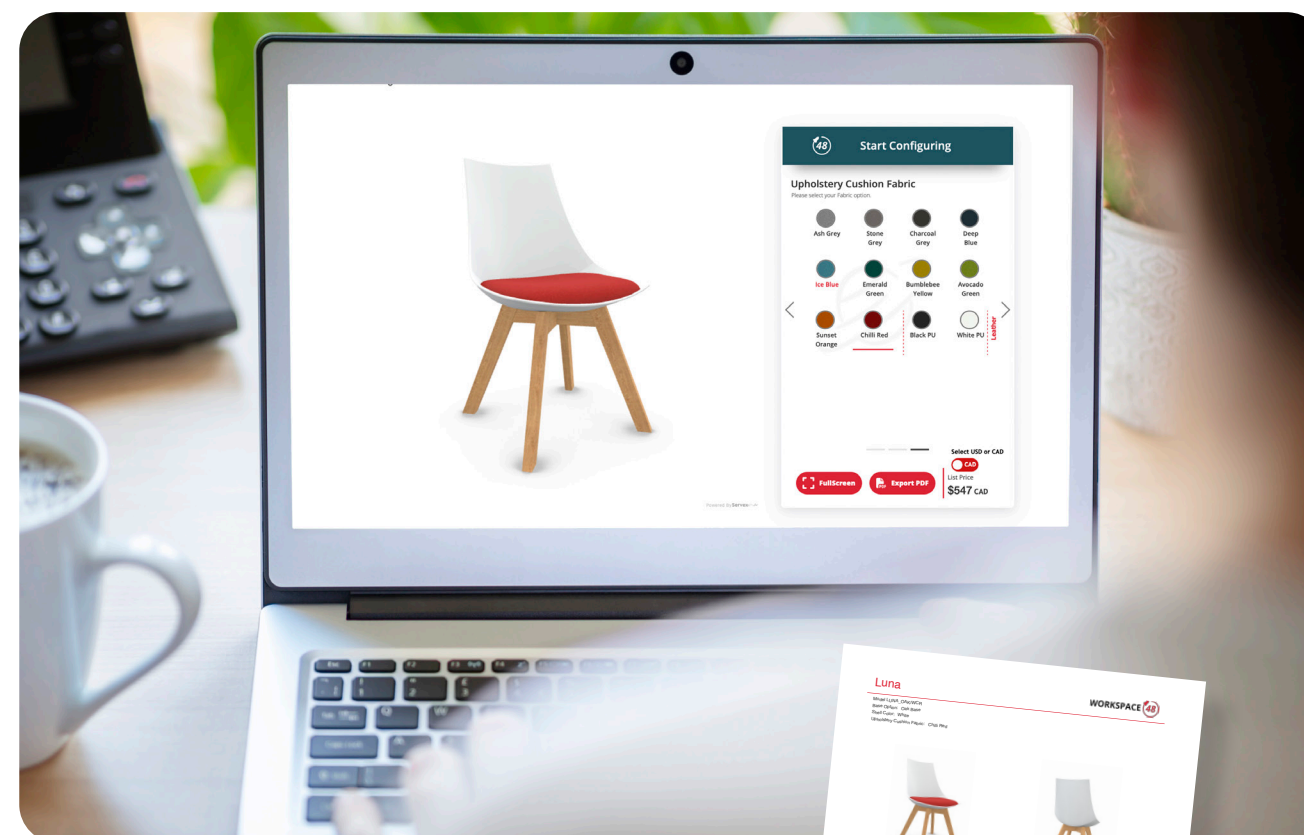
www.workspace48.com

PRODUCT CONFIGURATOR

Design Online

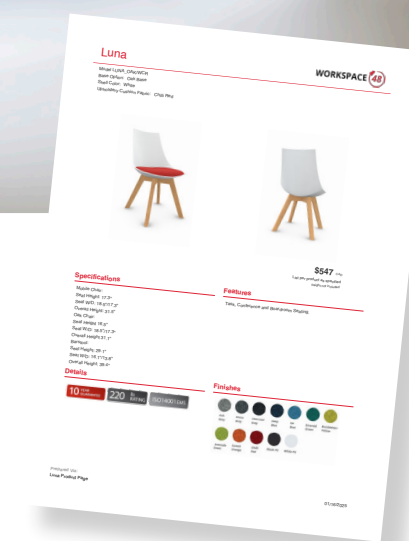
Visit our product pages to specify your styles and finishes on our chairs, Motion®, Mochi, Kinetic, Array and more:

workspace48.com/products



3 Easy Steps:

- 1 Toggle to USD or CAD
- 2 Design your product
- 3 Export a custom cut sheet!



WORKSPACE 

www.Workspace48.com

Showrooms by appointment only

79 Wingold Avenue

Toronto, ON M6B 1P8

Tel. +1 416-441-9898

200 Universal Road #22

Woodstock ON N4S 7W3

Tel. +1 519-533-1839



Stay up to date on our
latest product additions:

