



# Fulcrum Single

# a seamless view



The Fulcrum Single Monitor Arm creates a harmonious single monitor workflow. While supporting even the largest monitors, the heavy-duty gas spring allows you to perfectly counterbalance your monitors. Keep your cables camouflaged with built in cable management and keep you entirely focused on your task at hand.

10 YEAR GUARANTEE  
40 LB RATING



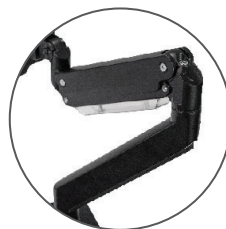
## Cable Management

The cable management system keeps cables concealed and neatly organized.



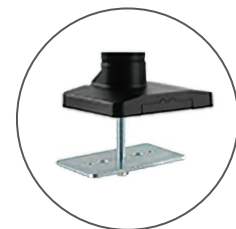
## VESA Mount

VESA mounts are detachable and fully adjustable.



## Counterbalance

Heavy-Duty Gas Spring counterbalances even the heaviest monitors.



## Mount Options

Two mount options are available including a desk clamp and a grommet.

## Applications:

Agile, Axis, & Anvil Desking

## Dimensions:

Max Height: 24 in\*  
Min Height: 10 in\*  
Max Depth: 25 in\*  
Min Depth: 8 in\*

\*Measurements from center of VESA plate.

## Specifications:

Fit Screen Size: 17" - 49"  
Fit Curved Monitor: Yes  
Weight Capacity: 2.2lbs~39.6lbs  
Tilt Range: +45°~-45°  
Swivel Range: +90°~-90°  
Screen Rotation: +90°~-90°

## Finishes:

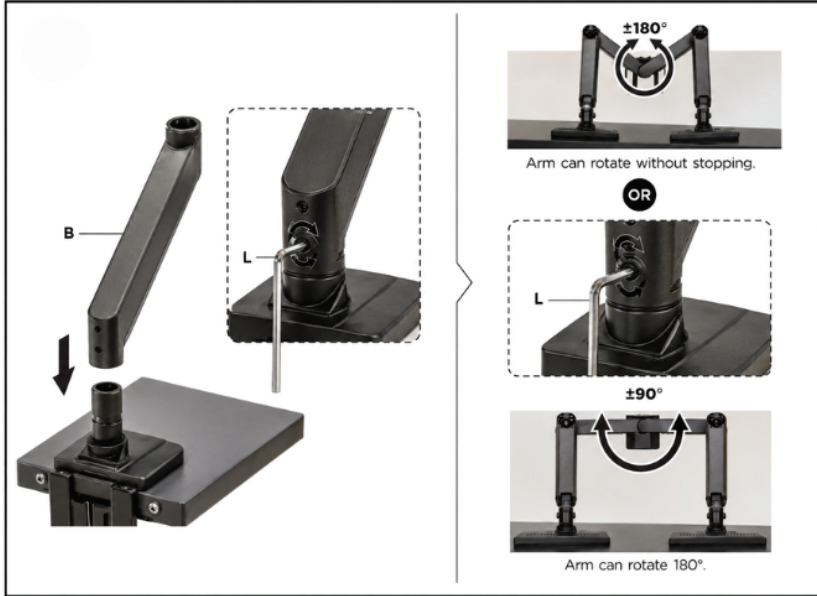


Black Powdercoat

## Limited Base Rotation for Better Workspace Control

Our monitor arms feature a limited base rotation system that helps keep monitors within each user's workspace.

A discreet locking screw prevents the arm from rotating into adjacent stations, ideal for narrow 24" deep dual sided workstations without a center spine screen.



10 YEAR  
GUARANTEE

40 LB  
RATING