

Kinetic.

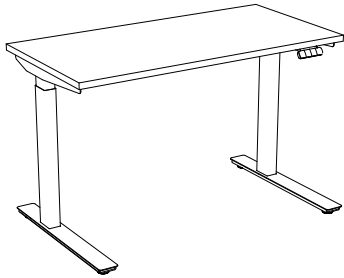
high powered height adjustability



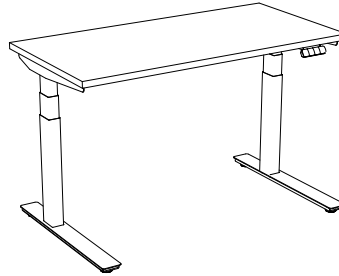
WORKSPACE 

Kinetic **Statement of Line**

Styles

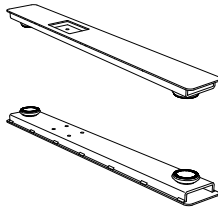


2-stage Legs

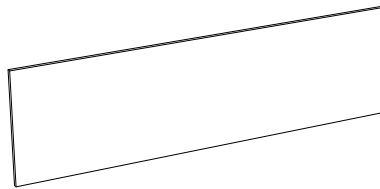


3-stage Legs

Options

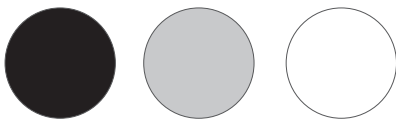


Feet (2 sizes)



Modesty Panel

Frames



Black

Silver

White

Worksurfaces / Modesty Panel



Classic White

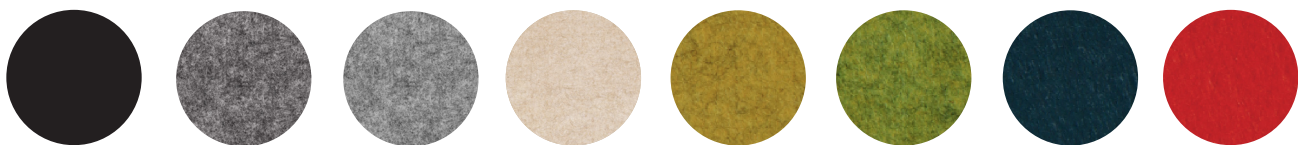
Continental Walnut

Landmark Wood

Grey Elm

Versi Privacy Screens

Ripple Collection (PET)



Charcoal

Stone

Ash

Natural

Honey

Avocado

Ocean

Chili

Kinetic Features

Frame finishes Silver, White or Black

2- or 3-stage options for multiple height ranges

C-Legs with two feet lengths to support 24" and 30" deep worksurfaces

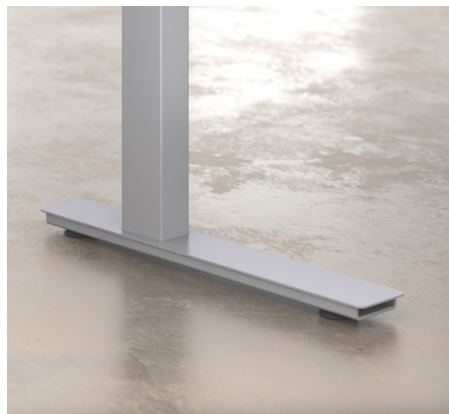
Laminate worksurfaces available in 4 colors

Versi privacy screens available in 8 colors, 4 styles and 6 bracket options

Optional modesty panels



Motorized push button handset with 3 memory presets



Two feet lengths to support work surface depths



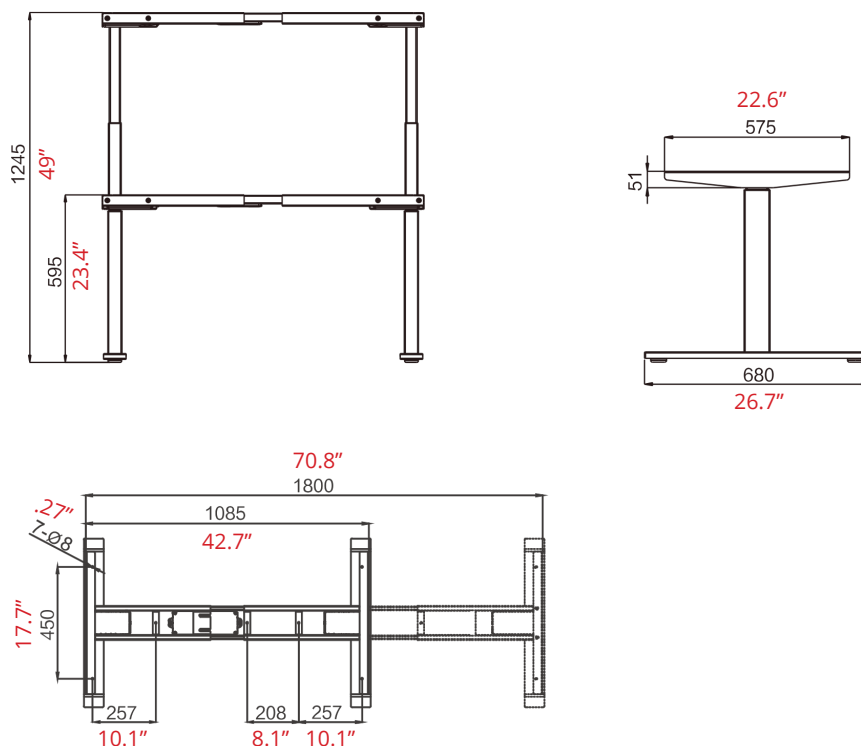
2- or 3-stage legs offer height range variability



Kinetic Specifications

Leg Styles	2- and 3-stage legs (No hole leg design: no screw on outside of frame)
Adjustable Height Range: 3-stage Legs ¹	22.6"-48.7" (575-1255mm)
Adjustable Height Range: 2-stage Legs ¹	27.7"-47.5" (704-1206mm)
Frame width extendable range	42.7" -70.85" (1085-1800mm) to fit desktop sizes 42"-72" (1200-1800mm)
Feet Sizes	C Leg feet in two sizes: 24" (600mm) and 28" (700mm)
Weight Capacity	270 lbs
Max Speed	Dual Motor with 1.5"/s (40mm/s) height adjustment
Low noise level	< 50dB with no-load condition
Power Cord Length	9'
Safety	Anti-collision safety protection
Standby power	< 0.1 W
Surface	Powder coating
Certifications	UL 962, BIFMA X5.5 (2-stage) BIFMA G1 (3-stage)

Red: imperial/inches
Black: metric/MM



¹ Does not include worksurface.

Kinetic Image Gallery

