

# WORKSPACE 48

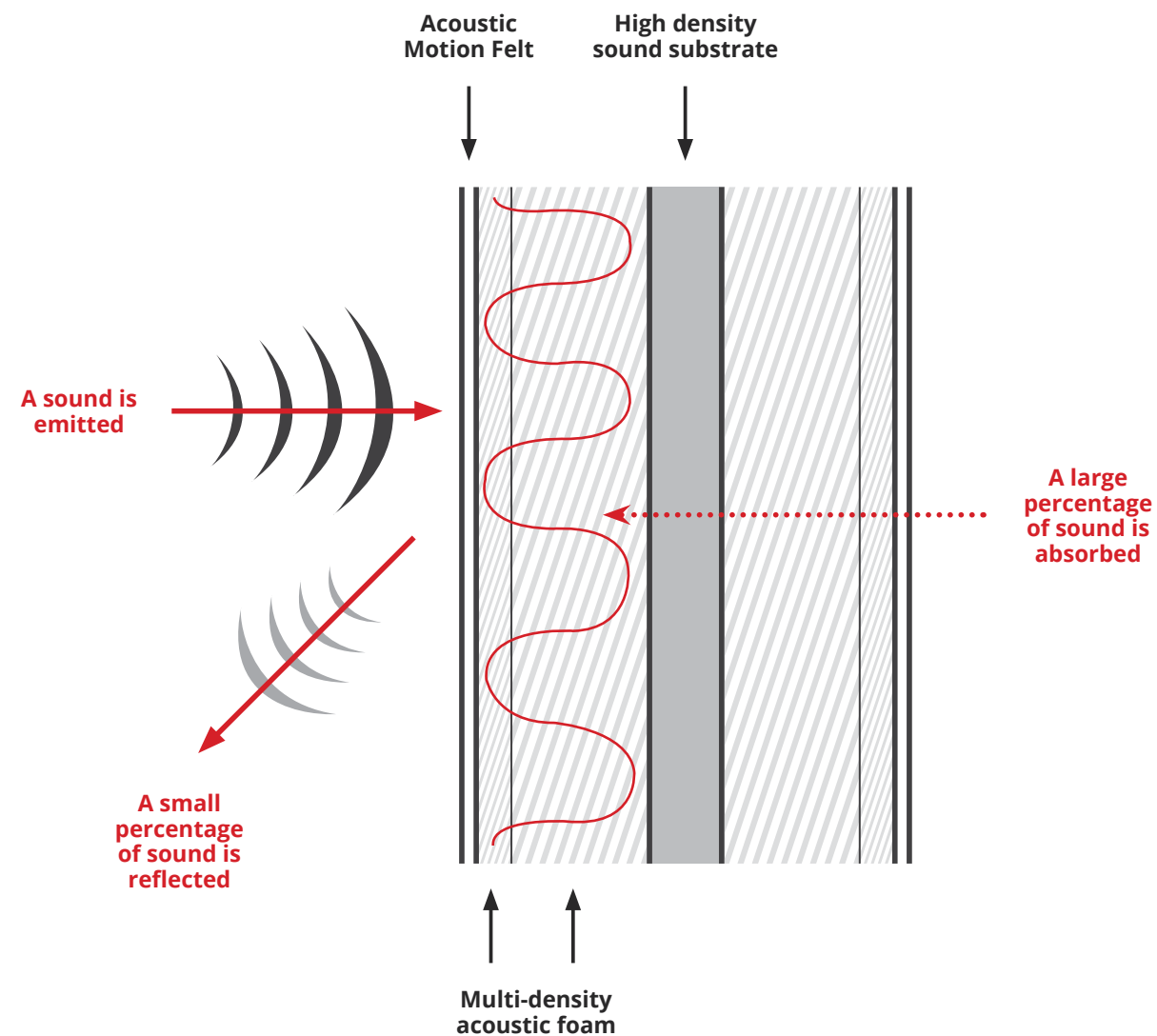
## MOTIONOFFICE PORTFOLIO



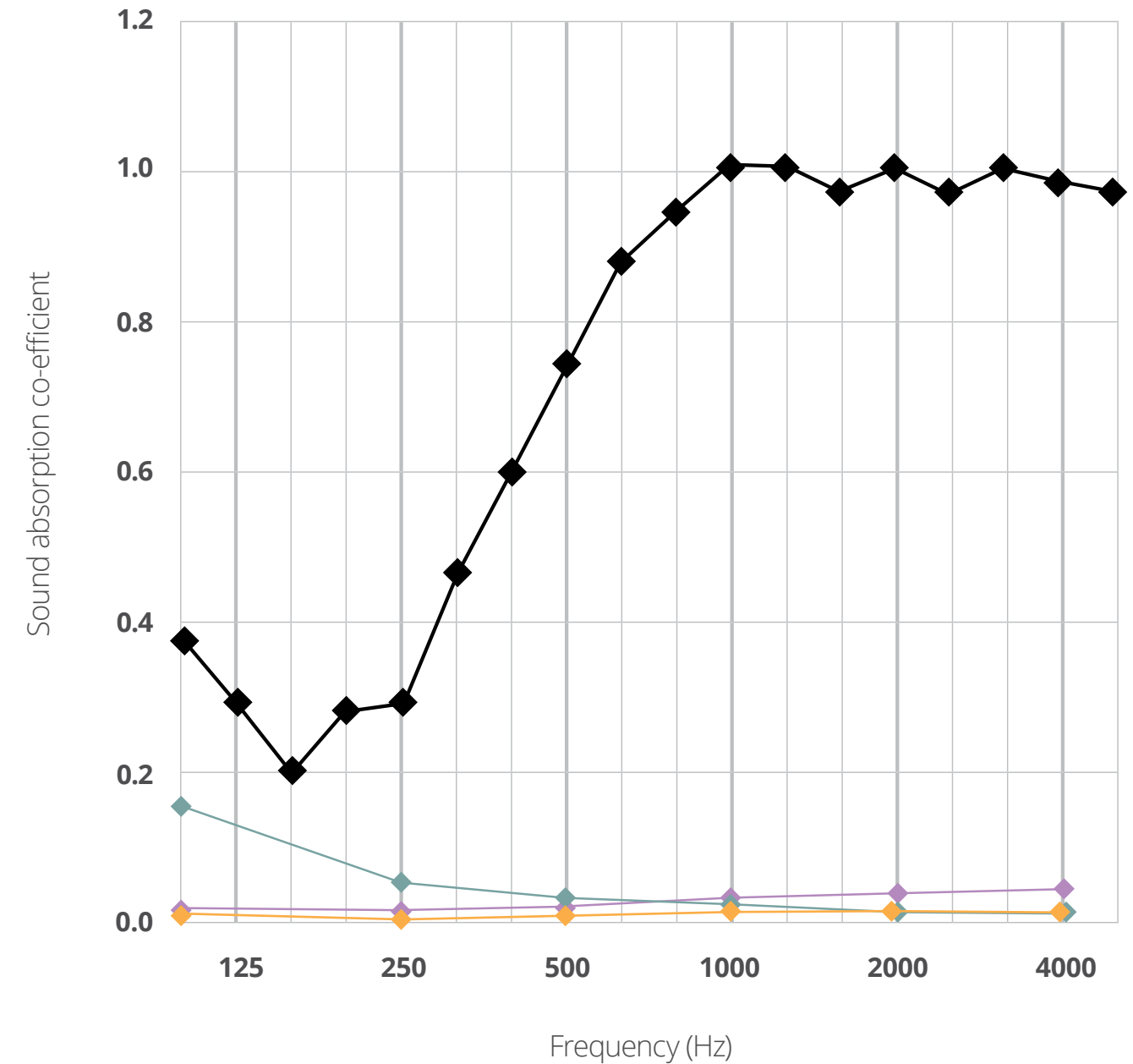
## Standard wall materials absorb 3%, MotionOffice has been tested and absorbs 76% of sound waves!

Imagine standing in the middle of a room with all concrete surfaces and one open window, and you blow a loud whistle. The sound that hits the open window passes right through. The sound that hits the concrete surfaces in the room begin to reflect back. The NRC (Noise Reduction Coefficient) of the open window would be 1.00 which is the absence of sound reflection. The NRC of concrete is .03, indicating that 97% of the noise that hits the concrete surfaces will reflect back off the surface. The NRC value of a surface simply denotes its ability to absorb vs reflect sound. The higher the NRC value, the stronger the sound absorption and the lower the sound reflection in the room.

**MotionOffice panels have an NRC rating of 0.76 which means that 76% of the sound wave entering into the material will be captured and converted. MotionOffice dramatically contributes to reduction of noise bleed in open plan environments!**



### MotionOffice Acoustics - absorbs 76% of sound waves!



KEY:

- MotionOffice Materials
- Glass
- Concrete
- Gypsum Board (Gib Board)





# *MotionOffice*

MotionOffice is about providing the most effective environments to suit the diverse range of tasks carried out from focused individual work to open collaborative meetings.

---





# *Focus Space*

MotionOffice individual work spaces provide effective settings to complete high focus individual tasks. A range of creative layouts are available to suit differing space and privacy requirements.









# *Collaboration Stations*

These collaborative work spaces are designed to provide a focused area to complete group tasks effectively. Barriers provide acoustic and visual separation and privacy from other workers.









# *Flexible Space*

Our range of soft seating provides areas for people to socialise or complete short mobile tasks in a relaxed environment. These products can be positioned to direct flow or add interest to an open plan area.







MOTION LOOP

- Standard features**
- Standard motion felt, milled wool blend textile
  - Black powdercoat to all steel components
  - Steel frame construction
  - Levelling glides
  - Ganging mechanism secures pieces in desired layout
  - Modular design allows endless configurations and sizing



MOTION ARC

- Standard features**
- Standard motion felt, milled wool blend textile
  - Black powdercoat to all steel components
  - Worksurface is white melamine on E1 grade substrate with matching SPVC edge
  - Steel frame construction
  - Levelling glides
  - Configurable in three, four, and five section layouts



MOTION MEETING

- Standard features**
- Standard motion felt, milled wool blend textile
  - Black powdercoat to all steel components
  - Worksurface is white melamine on E1 grade substrate with matching SPVC edge
  - Steel frame construction
  - Levelling glides
  - Seats up to 4 persons
  - Optional seatback cover upgrade in 8 colors



MOTION LOOP SUGGESTED LAYOUT



MOTION EXPO

- Standard features**
- Standard motion felt, milled wool blend textile
  - Black powdercoat to all steel components
  - Worksurface is white melamine on E1 grade substrate with matching SPVC edge
  - Steel frame construction
  - Levelling glides
  - 2-tier seating for excellent for presentations and obscured viewing



MOTION WING 1

- Standard features**
- Standard motion felt, milled wool blend textile
  - Black powdercoat to all steel components
  - Steel frame construction
  - Levelling glides
  - Acoustic wings for privacy and a quiet environment
  - Optional seatback cover upgrade in 8 colors



MOTION OTTO

- Standard features**
- Standard motion felt, milled wool blend textile
  - Thick foam seat cushion
  - Caster base makes it easy to manoeuvre around
  - Add a pop of color to any space with 10 seat cover options
  - The perfect seat for those drop-in visitors and in the creative zones in your workspace
  - Optional cover upgrade available in 10 colors



MOTION TABLES & ACCESSORIES

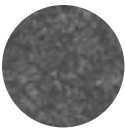
- Standard features**
- Black powdercoat to all steel components
  - Worksurfaces are White melamine on E1 grade substrate with matching SPVC edge



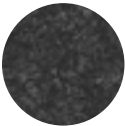


Motion Felt Colors

Stock Finishes


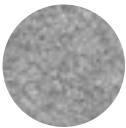


**MFST** Stone Grey



**MFCL** Charcoal Grey


Upgrade Finishes (Applies to Meeting and Wing 1 seatbacks, Throw Pillows only)




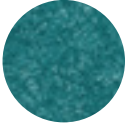
**MFAS** Ash Grey**MFBB** Bumblebee Yellow



**MFDB** Deep Blue**MFAV** Avocado Green



**MFIC** Ice Blue**MFSO** Sunset Orange



**MFEM** Emerald Green**MFCR** Chili Red

Fabric Infomation

Motion Felt is a wool blend textile with a soft hand and contemporary color-ways that will add a subtle, elegant distinction to larger, upholstered furniture items.

Motion Felt is yarn dyed and has been milled to give it a direction-less felted appearance. The milling process also increases the inherent durability and water repellent properties, which along with the natural flame resistant properties of wool, makes this fabric very suitable for heavy commercial use.

Technical Specifications

Type:	Upholstery
Composition:	50% Wool 50% Polyester
Weight:	750g/lin.m
Roll Width:	150cm
Repeat:	None
Abrasion:	100,000 rubs (Martindale)
Pilling:	4-5, BS EN ISO 12945-2:2000
Light Fastness:	4-5, BS EN ISO 105-B02
Flammability:	BS EN 1021.1 (cigarette) BS EN 1021.2 (match) CAL TB 117-2013
Color Matching:	Batch to batch variations in color may occur within commercial tolerances

Maintenance & Cleaning

Wool is naturally anti-static and water repellent making it less likely to attract dirt and absorb spillages. It is important to keep the fabric clean as this will extend the life of the fabric and preserve its fire retardant properties. Frequent (weekly) vacuuming on low suction is advised to remove dust and loose soiling. Under normal commercial use we recommend cleaning 1-3 times yearly by a professional dry cleaning service. It is important to protect the fabric from direct and refracted sunlight as this will ensure that the fabric retains its original color.

Spot Cleaning

Soiling should be acted on immediately to prevent lasting damage to the fabric. We always recommend testing stain removal detergents and solvents on an inconspicuous area first.

- Immediately absorb any liquids with an absorbent cloth.
- Scrape off any solidified material with a spoon.
- Remove loose material with a vacuum cleaner on low power.
- Wipe clean with a damp cloth using pH-neutral upholstery shampoo (follow directions on packaging). Do not scrub or use a stiff brush.
- Use clean water without any cleaning product for the final clean.
- Do not use dish washing or laundry detergents. Do not use detergents, bleach, ammonia or soap intended for hard surfaces.
- Dry with a clean white cloth using a circular dabbing motion to avoid edge marks. Use of hair dryer may also help avoid edge marks.
- Allow to dry thoroughly before reusing.

This is intended as a guide only. We recommend consultation with a fabric care professional.

Environmental

As a caring, corporate citizen, we support the responsible stewardship of the earth, its inhabitants and its resources.

Our fabrics are designed and made to last, and in their manufacture, use and disposal, embody the environmental principles of Reduce, Reuse & Recycle.

Fire retardants are bromide free.

Dyes are free from heavy metals.





# *Our Vision*

**REVOLUTIONIZING THE WAY OFFICE  
FURNITURE IS BOUGHT AND SOLD.**

**WORKSPACE** 

E [info@workspace48.com](mailto:info@workspace48.com) | P 416 441 9898