

## *Axis*

AXIS office environments create a sense of community & space and support dynamic changes in workplace technologies while evolving work practices.



# AXIS STRAIGHTLINE



Axis Straightline with Ignite Screens, Axis Caddies with Toppas, transom mount shelves and screen mounted monitor brackets.

## STANDARD FEATURES

- 2.0" x 2.0" end frames with flush ground weld finish
- 2.0" x 1.0" rails
- 3.0" height adjustment in each foot
- White worksurfaces are in stock. Other finish options are available
- Silver powdercoat and Arctic White powdercoat to all steel components.

## STANDARD WORKTOP SIZES STRAIGHTLINE

48"w x 24"d x 28.75"h  
 48"w x 30"d x 28.75"h  
 60"w x 24"d x 28.75"h  
 60"w x 30"d x 28.75"h  
 72"w x 24"d x 28.75"h  
 72"w x 30"d x 28.75"h



Straightline Desk



Straightline Two Sided



Straightline Single Sided Double



Straightline Two Sided Double

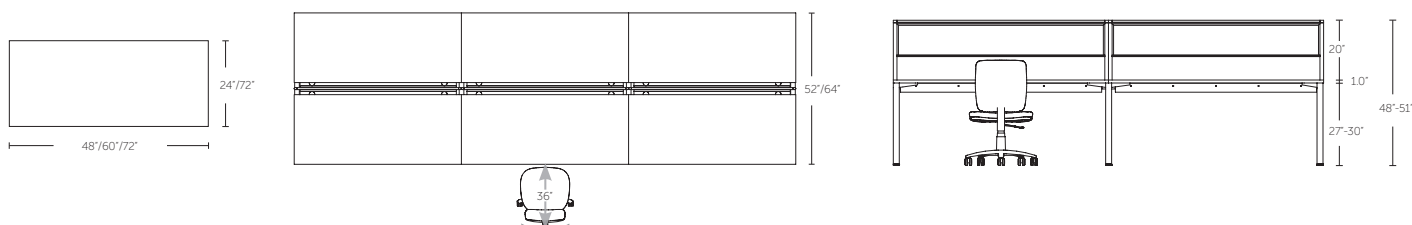


Straightline Single Sided Triple



Straightline Two Sided Triple

## AXIS SYSTEM SIZE GUIDE





# AXIS 90°



*Axis Desking with Ignite Screens, Balance Seating, Axis Mobiles and Shelves*

## STANDARD FEATURES

- 2.0" x 2.0" end frames with flush ground weld finish
- 2.0" x 1.0" rails
- 3.0" height adjustment in each foot
- White worksurfaces are in stock. Other finish options are available
- Silver powdercoat and Arctic White powdercoat to all steel components.

## STANDARD WORKTOP SIZES 90° DEGREE

72" x 72"w x 24"d x 28.75"h

72" x 72"w x 30"d x 28.75"h



90 Degree Workstation



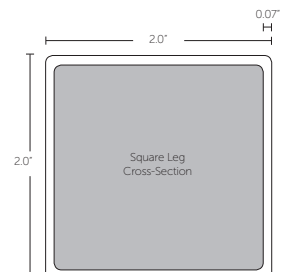
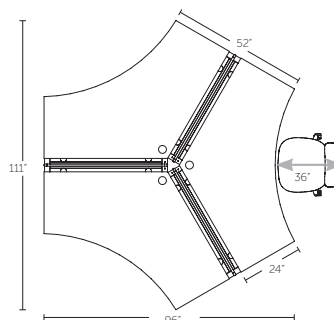
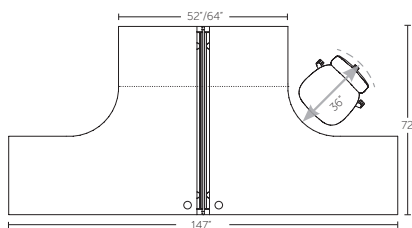
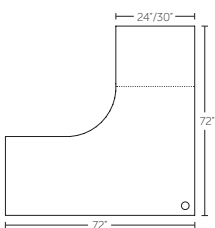
90 Degree Two Pod



90 Degree Four Pod



90 Degree Eight Cluster



# AXIS 120°



Axis Desking with Ignite Screens

## STANDARD FEATURES

- 2.0" x 2.0" end frames with flush ground weld finish
- 2.0" x 1.0" rails
- 3.0" height adjustment in each foot
- White worksurfaces are in stock. Other finish options are available
- Silver powdercoat and Arctic White powdercoat to all steel components.

## STANDARD WORKTOP SIZES 120° DEGREE

48"w x 48"/24"d



120 Degree Workstation



120 Degree 2/3



120 Degree Three Cluster



120 Degree Six Cluster

TORONTO +416 441 9898

WORKSPACE **48**



ANVIL



AXIS



STORAGE  
& RECEPTION



MODULUS



MODULUS  
FLIP



UNI FLIP



ACCESSORIES