

Anvil

Anvil frame systems give your office spaces a refreshing image that will encourage freedom of thought and inspired decision making.



ANVIL STRAIGHTLINE



Anvil Desking with Black Screens, Balance Seating and Axis Storage

STANDARD FEATURES

- 2.0" x 2.0" triangle end frames with flush ground weld finish
- 2.0" x 1.0" rails
- White worksurfaces are in stock. Other finish options are available
- Arctic White powdercoat to all steel components
- Leveling glides
- Standard screen colours in Translucent, Red or Black



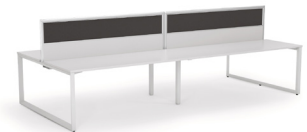
Straightline Desk



Straightline Two Sided



Straightline Single Sided Double



Straightline Two Sided Double

STANDARD WORKTOP SIZES STRAIGHTLINE

- 48"w x 24"d x 28.75"h
- 48"w x 30"d x 28.75"h
- 60"w x 24"d x 28.75"h
- 60"w x 30"d x 28.75"h
- 72"w x 24"d x 28.75"h
- 72"w x 30"d x 28.75"h

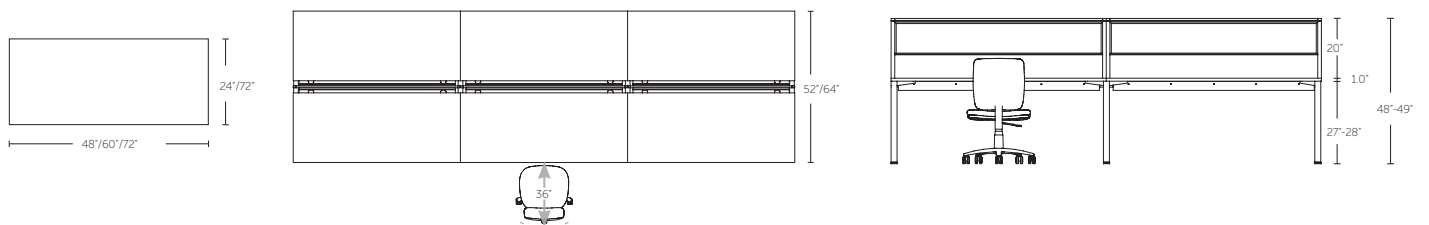


Straightline Single Sided Triple



Straightline Two Sided Triple

ANVIL SYSTEM SIZE GUIDE



ANVIL 90°



Anvil Desking with Ignite and Black Screens, Axis Credenzas, Deskmounted Shelves, Mobiles and Caddies

STANDARD FEATURES

- 2.0" x 2.0" triangle end frames with flush ground weld finish
- 2.0" x 1.0" rails
- White worksurfaces are in stock. Other finish options are available
- Arctic White powdercoat to all steel components
- Leveling glides
- Standard screen colours in Translucent, Red or Black



90 Degree Workstation



90 Degree Two Pod



90 Degree Four Pod

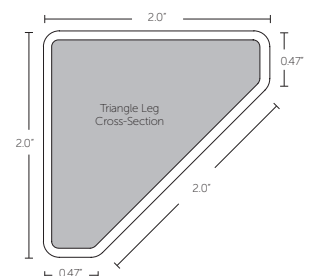
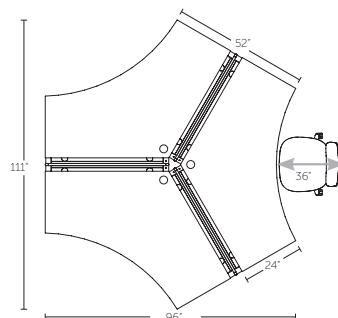
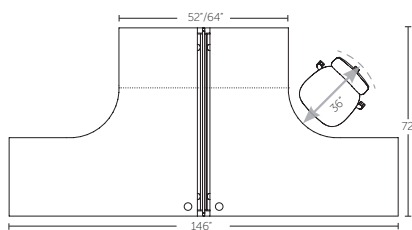
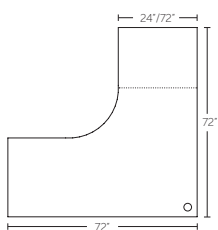


90 Degree Eight Cluster

STANDARD WORKTOP SIZES 90° DEGREE

72" x 72"w x 24"d x 28.75"h

72" x 72"w x 30"d x 28.75"h



ANVIL 120°



*Anvil Desking with Black Screens,
Axis Shelves and Axis Towers*

STANDARD FEATURES

- 2.0" x 2.0" x 2.0" triangle end frames with flush ground weld finish
- 2.0" x 1.0" rails
- White worksurfaces are in stock. Other finish options are available
- Arctic White powdercoat to all steel components.
- Leveling Glides
- Standard screen colours: Translucent, Red or Black



120 Degree Workstation



120 Degree 2/3



120 Degree Three Cluster



120 Degree Six Cluster

STANDARD WORKTOP SIZES 120° DEGREE

48" x 48"w x 24"d x 28.75"h

TORONTO + 416 441 9898

WORKSPACE 



ANVIL



AXIS



STORAGE
& RECEPTION



MODULUS



MODULUS
FLIP



UNI FLIP



ACCESSORIES