

Agile HEIGHT ADJUST

Standing up at work is more than just a trend, it is also a healthier option. Move up another level with a sit/stand adjustment at the flick of a switch and enables your office workspace the ability to adapt to suit multiple users.



AGILE SINGLE SIDED



STANDARD FEATURES

- Overload operation protection
- Electronic screen displaying exact height with 4 preset height settings
- Double rail support for extra stability and strength
- Wide base foot and leveller for adjustment
- Height range: 25" - 44"
- Load capacity: 225 lbs.

- Height adjustment speed: 1"/second
- Gross weight: 80 lbs.
- Warranty: frame - 10 years; motor 5 years

**STANDARD FRAME SIZES
ACCOMMODATE WORKSURFACE
SIZES**

48"w x 24"d	48"w x 30"d
60"w x 24"d	60"w x 30"d
72"w x 24"d	72"w x 30"d

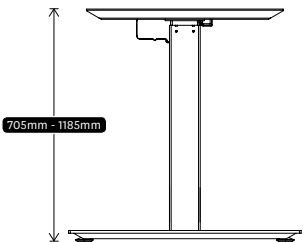
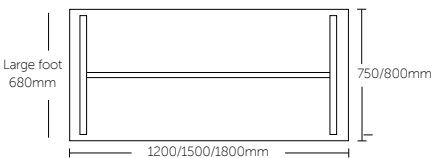
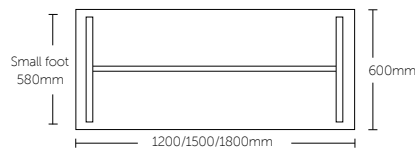


Single-sided Desk



*5 Year Guarantee on electric motor

SIZE GUIDE



2 Column Electric Adjust

AGILE BACK-TO-BACK



STANDARD FEATURES

- Overload operation protection
- Electronic screen displaying exact height with 4 preset height settings
- Double rail support for extra stability and strength
- Wide base foot and leveller for adjustment
- Height range: 25" - 44"
- Load capacity: 225 lbs.

- Height adjustment speed: 1"/second
- Gross weight: 80 lbs.
- Warranty: frame - 10 years; motor 5 years

STANDARD FRAME SIZES ACCOMMODATE WORKSURFACE SIZES

48"w x 24"d	48"w x 30"d
60"w x 24"d	60"w x 30"d
72"w x 24"d	72"w x 30"d

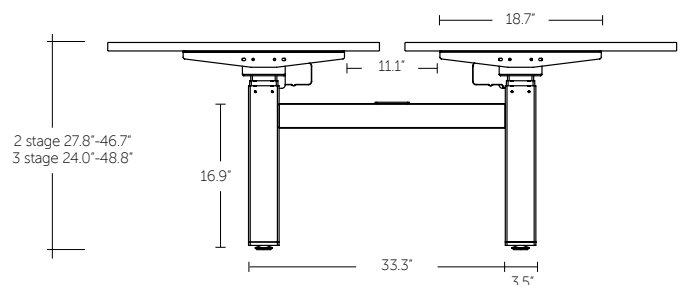
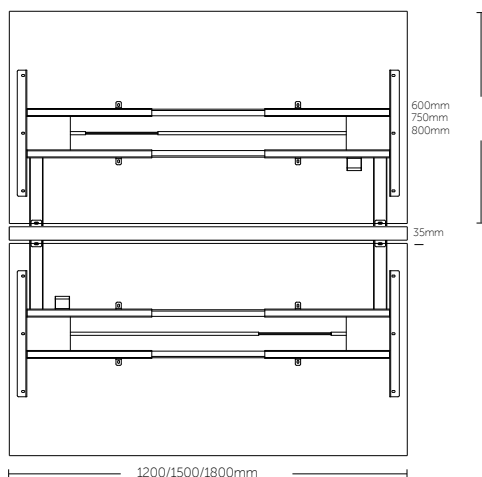


double-sided Desk

10 YEAR
GUARANTEE*

*5 Year Guarantee on electric motor

SIZE GUIDE



DIVIDERS & ELECTRICAL

DIVIDER PANELS



CLAMP ON

STANDARD SIZES

- 47" x 24"
- 59" x 24"



Deep Grey
DG37



Spectrum Red
DG34



Bright Blue
BB21

SLIDE ON

STANDARD SIZES

- 23" x 18.5"
- 29" x 18.5"

POWER MODULES

IN STOCK POWER OPTIONS

OPTION 1

- 4 Power Outlets, 2 Knockouts for RJ45, 72" or 108" Cord
- White Powdercoat grommet



OPTION 2

- 4 Power Outlets, 2 2.1A USB charging ports, 1 RJ45 Cat 6 Data knockout
- White Powdercoat grommet



CABLE MANAGEMENT



STANDARD FEATURES

- 36"W x 4"H
- White Powdercoat

TORONTO +416 441 9898

WORKSPACE 



ANVIL



AXIS



STORAGE
& RECEPTION



MODULUS



MODULUS
FLIP



UNI FLIP



ACCESSORIES